



LOCATION MAP

LATITUDE: 39°52'02" N LONGITUDE: 83°06'23" W



PORTION TO BE IMPROVED	
INTERSTATE HIGHWAY	
FEDERAL ROUTES	
STATE ROUTES	
COUNTY & TOWNSHIP ROADS	
OTHER ROADS	

DESIGN DESIGNATION

CURRENT ADT (2023)	9,868
DESIGN YEAR ADT (2033)	10,363
DESIGN HOURLY VOLUME (2033)	599
DIRECTIONAL DISTRIBUTION	52%
TRUCKS (24 HOUR B&C)	6%
DESIGN SPEED	55
LEGAL SPEED	55
DESIGN FUNCTIONAL CLASSIFICATION:	
03 PRINCIPAL ARTERIAL (URBAN)	
NHS PROJECT	NO

DESIGN EXCEPTIONS

NONE REQUIRED

ADA DESIGN WAIVERS

NONE REQUIRED

UNDERGROUND UTILITIES

Contact Two Working Days
Before You Dig


Before You Dig

OHIO811, 8-1-1, or 1-800-362-2764
(Non members must be called directly)



PLAN PREPARED BY:
RESOURCE INTERNATIONAL INC.
6350 PRESIDENTIAL GATEWAY
COLUMBUS, OHIO 43231
(614) 823-4949

STATE OF OHIO
DEPARTMENT OF TRANSPORTATION

FRA-US62-4.90

JACKSON TOWNSHIP

FRANKLIN COUNTY

INDEX OF SHEETS:

TITLE SHEET	1
SCHEMATIC PLAN	2
TYPICAL SECTIONS	3
GENERAL NOTES	4 - 5
MAINTENANCE OF TRAFFIC	6 - 9
PLAN - SYSTEM A	10
CROSS SECTIONS - SYSTEM A	11- 14
PLAN - SYSTEM C	15
CROSS SECTIONS - SYSTEM C	16- 18
STORM SEWER PROFILES	19

FEDERAL PROJECT NUMBER

NONE

RAILROAD INVOLVEMENT

NONE

PROJECT DESCRIPTION

TWO DRAINAGE SYSTEMS ALONG US-62 ARE PROPOSED FOR IMPROVEMENT. SYSTEM A PROPOSED WORK ENTAILS CONSTRUCTING A MANHOLE TO CONNECT TWO 36" PIPES. THE OUTLETTING 36" PIPE AND THE 42" PIPE IT IS CONNECTED TO ARE TO BE REPLACED WITHOUT DISTURBING THEIR CONNECTING JUNCTION CHAMBER. FOR SYSTEM C, REPLACE A JUNCTION CHAMBER WITH A CATCH BASIN AND PLACE A NEW 24" PIPE RUN.

EARTH DISTURBED AREAS

PROJECT EARTH DISTURBED AREA:	0.42 ACRES
ESTIMATED CONTRACTOR EARTH DISTURBED AREA:	0.10 ACRES
NOTICE OF INTENT EARTH DISTURBED AREA:	N/A (NOI NOT REQUIRED)


LIMITED ACCESS

THIS IMPROVEMENT IS ESPECIALLY DESIGNED FOR THROUGH TRAFFIC AND HAS BEEN DECLARED A LIMITED ACCESS HIGHWAY OR FREEWAY BY ACTION OF THE DIRECTOR IN ACCORDANCE WITH THE PROVISIONS OF SECTION 5511.02 OF THE OHIO REVISED CODE.

2023 SPECIFICATIONS

THE STANDARD SPECIFICATIONS OF THE STATE OF OHIO, DEPARTMENT OF TRANSPORTATION, INCLUDING SUPPLEMENTAL SPECIFICATIONS LISTED IN THE PLANS, CHANGES LISTED IN THE PROPOSAL, AND THE SUPPLEMENTAL SPECIFICATION 800 VERSION INDICATED ON THE PROPOSAL SHALL GOVERN THIS IMPROVEMENT.


Anthony C. Turowski, P.E.
District 06 Deputy Director


Jack Marchbanks, PhD
Director, Department of Transportation

STANDARD CONSTRUCTION DRAWINGS				CITY OF GROVE CITY SCD	SUPPLEMENTAL SPECIFICATIONS		SPECIAL PROVISIONS
BP-3.1	1/21/22	MH-3	7/21/23	C-GC-80	2/2019	800	1/19/24
		MT-101.60	4/21/23			823	1/21/22
CB-458A	7/16/21	TC-65.10	1/17/14			832	7/21/23
		TC-65.11	7/15/22			902	7/19/19
HW-1.1	7/20/18						
HW-2.1	7/15/22						
HW-2.2	7/20/18						
MGS-1.1	7/16/21						
MGS-2.1	1/19/18						
MGS-4.3	1/18/13						

DESIGN AGENCY


6350 PRESIDENTIAL GATEWAY
COLUMBUS, OHIO 43231
(614) 823-4949

DESIGNER

KSJ

REVIEWER

BBB MM-DD-YY

PROJECT ID

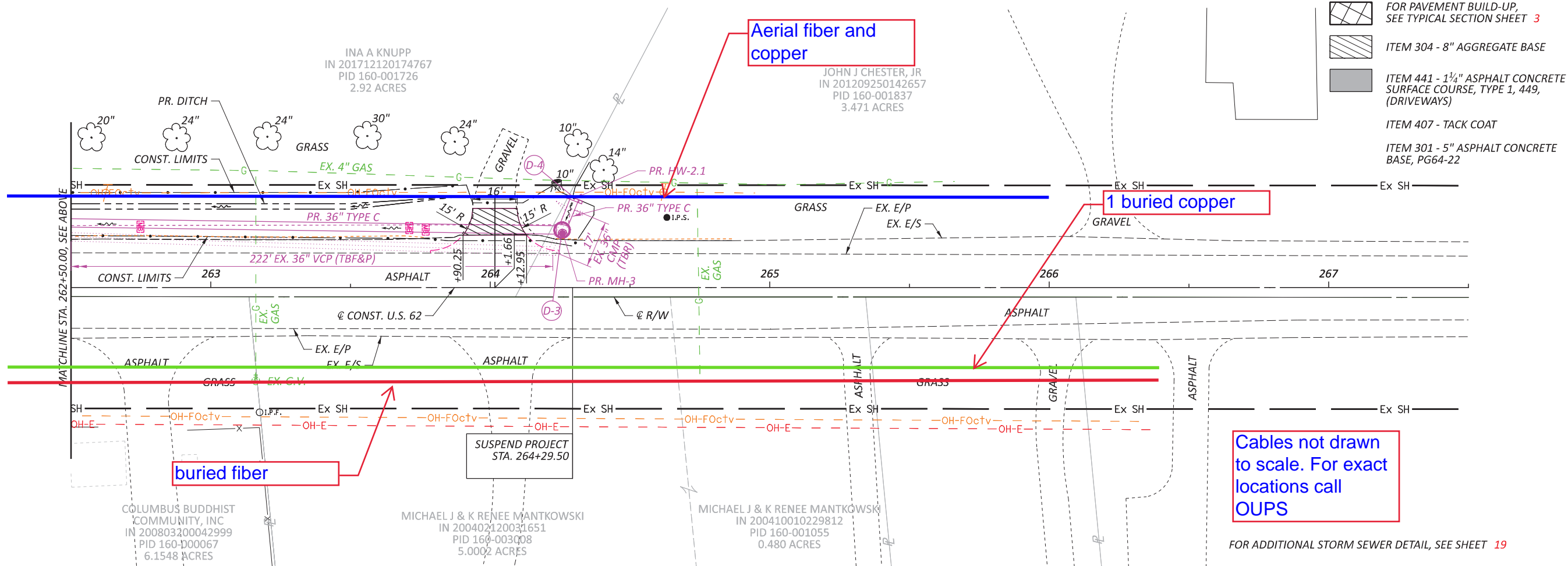
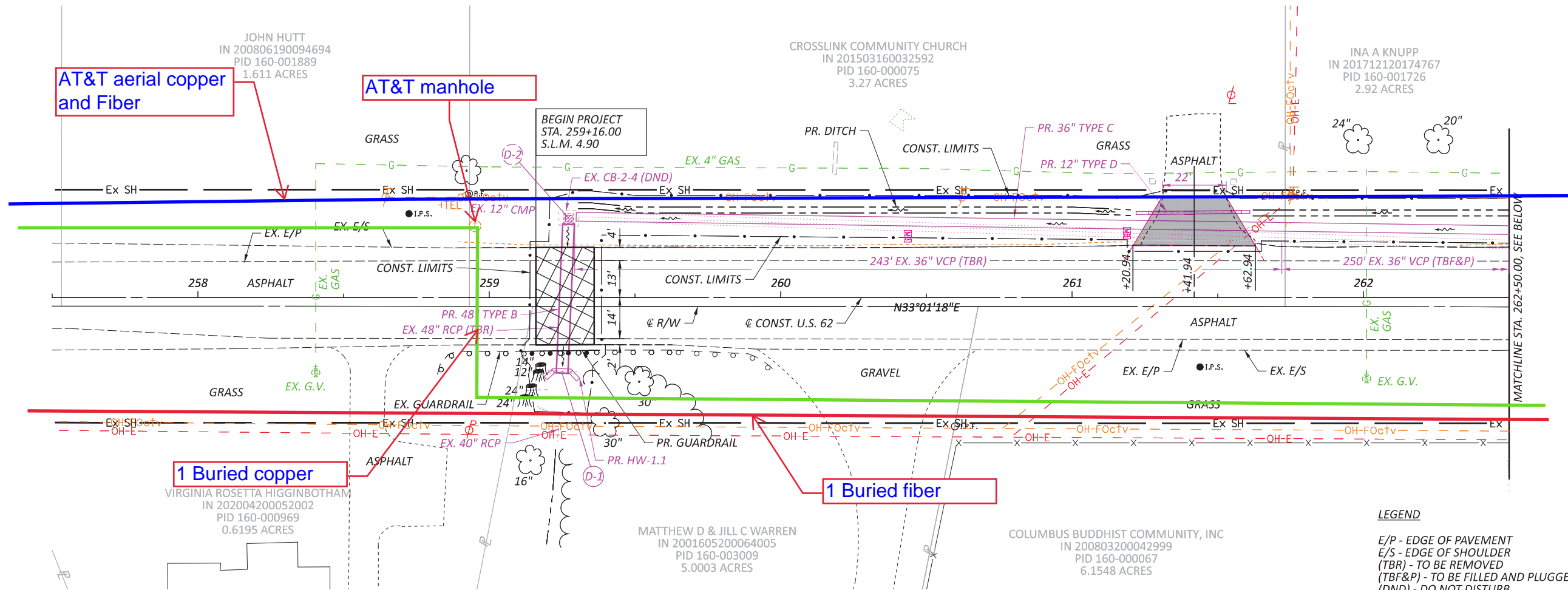
119042

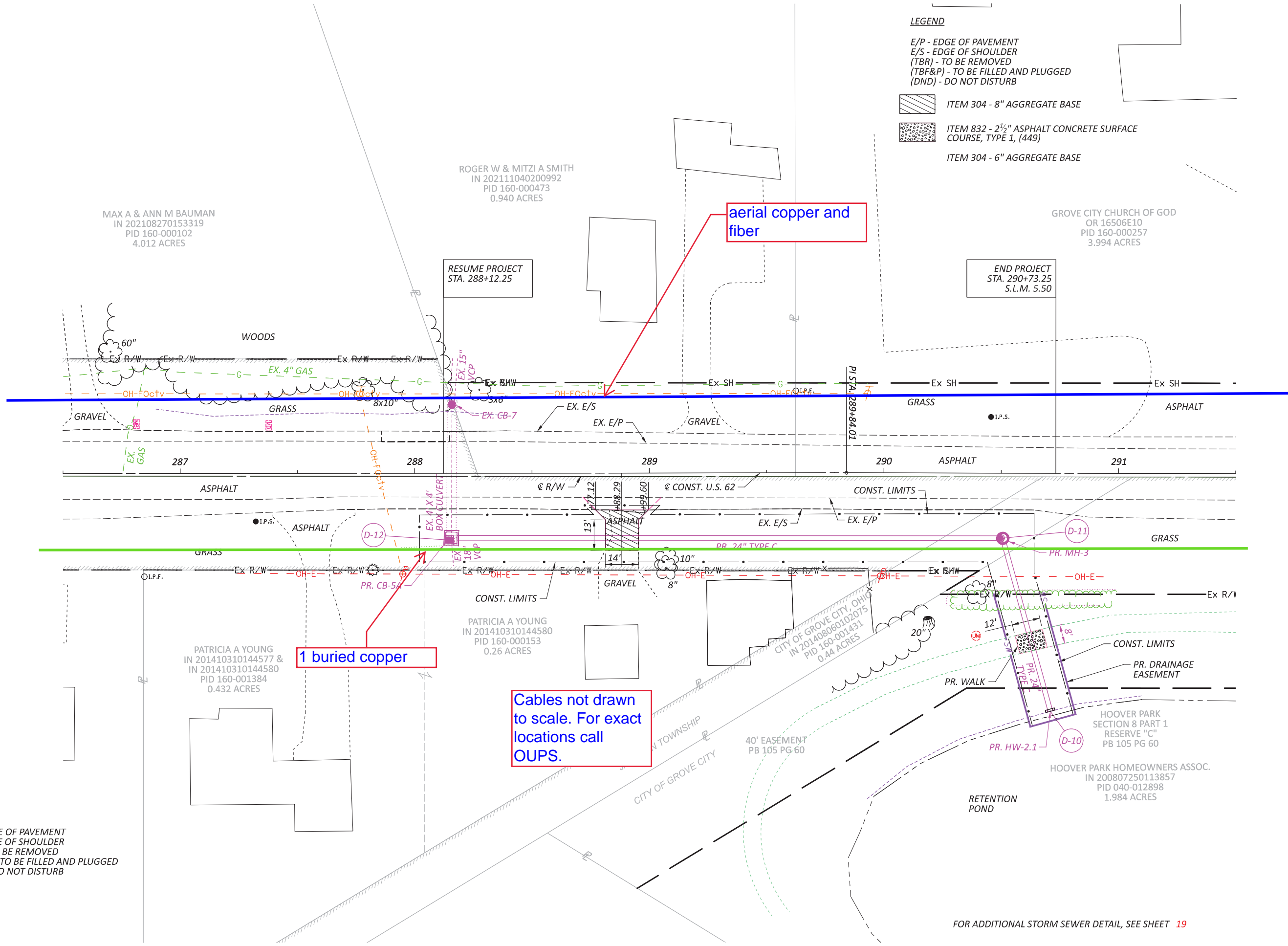
SHEET

P.1

TOTAL

19





PLAN - SYSTEM C
STA. 286+50.00 TO STA. 291+50.00

LEGEND
E/P - EDGE OF PAVEMENT
E/S - EDGE OF SHOULDER
(TBR) - TO BE REMOVED
(TBF&P) - TO BE FILLED AND PLUGGED
(DND) - DO NOT DISTURB

FOR ADDITIONAL STORM SEWER DETAIL, SEE SHEET 19

DESIGN AGENCY
RESOURCE INTERNATIONAL
6350 PRESIDENTIAL GATEWAY
COLUMBUS, OHIO 43221
(614) 823-1949

DESIGNER
KSJ

REVIEWER
BBB MM-DD-YY

PROJECT ID
119042

SHEET TOTAL
P.15 19